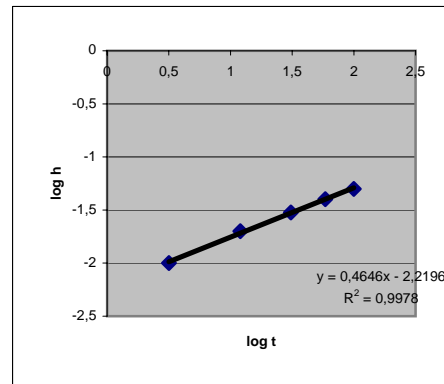
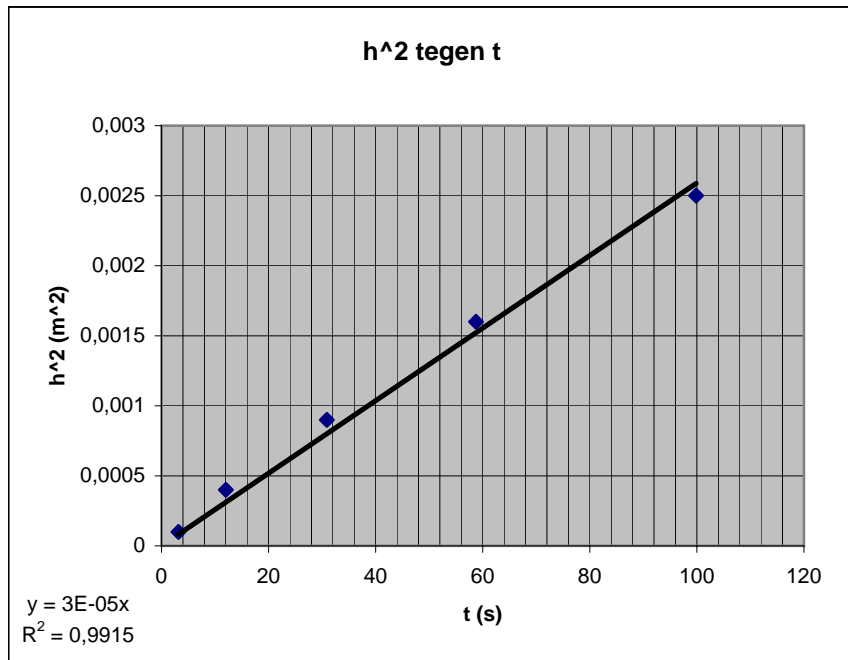


h	t	h ²	log h	log t
0,01	3,17	0,0001	-2	0,501059
0,02	12,02	0,0004	-1,69897	1,079904
0,03	30,87	0,0009	-1,522879	1,489537
0,04	58,74	0,0016	-1,39794	1,768934
0,05	99,84	0,0025	-1,30103	1,999305

$$\log(h) = (\text{alfa})^{-1} \cdot \log(t) + b$$

alfa 2,15
 b -4,78

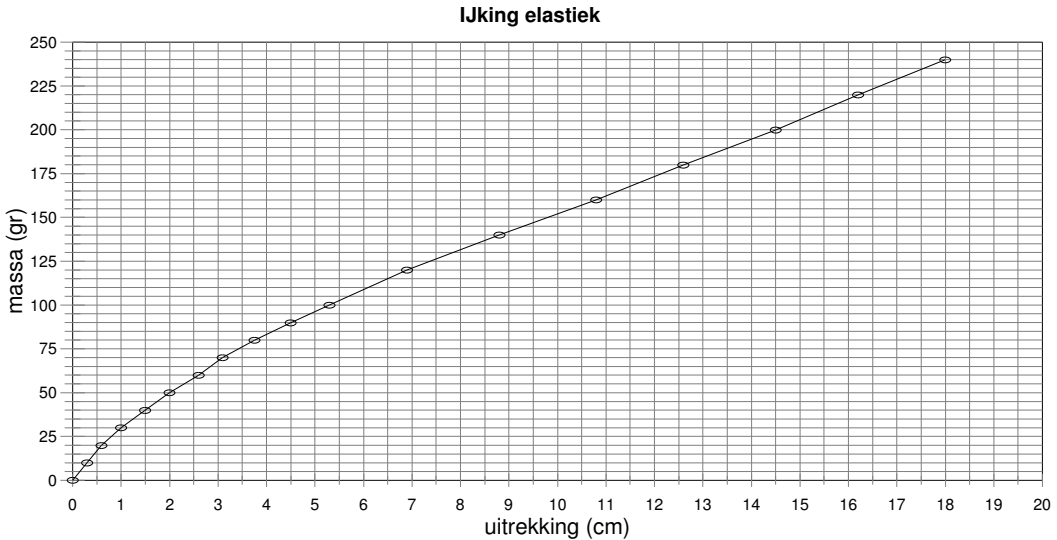


$$h = 5,5e-3 \cdot \text{wortel}(t)$$

IJking elastiek

*l*0 (cm) 12.0

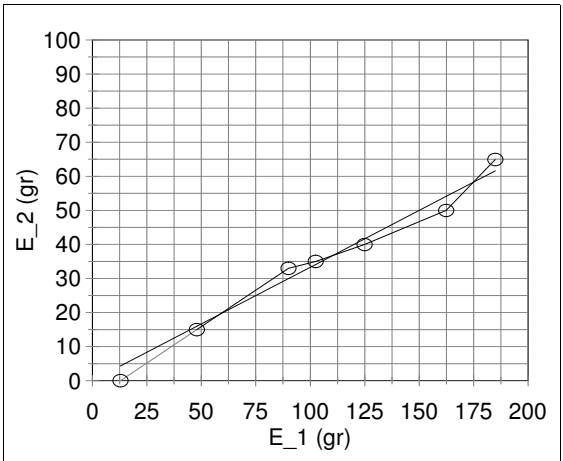
<i>m</i> (gr)	<i>l</i> (cm)	<i>l</i> - <i>l</i> 0 (cm)
0	12.0	0.0
10	12.3	0.3
20	12.6	0.6
30	13.0	1.0
40	13.5	1.5
50	14.0	2.0
60	14.6	2.6
70	15.1	3.1
80	15.8	3.8
90	16.5	4.5
100	17.3	5.3
120	18.9	6.9
140	20.8	8.8
160	22.8	10.8
180	24.6	12.6
200	26.5	14.5
220	28.2	16.2
240	30.0	18.0



Wrijving

*l*0 (cm) 12.0

<i>m</i> (gr)	<i>l</i> 1 (cm)	<i>l</i> 2 (cm)	<i>l</i> 1- <i>l</i> 0 (cm)	<i>l</i> 2- <i>l</i> 0 (cm)	<i>E</i> 1 (cm)	<i>E</i> 2 (cm)	<i>E</i> 2 berekend
0	12.4	12.0	0.4	0.0	13.0	0.0	4.3
20	13.9	12.5	1.9	0.5	48.0	15.0	16.0
40	16.5	13.2	4.5	1.2	90.0	33.0	30.0
50	17.5	13.2	5.5	1.2	102.5	35.0	34.1
60	19.3	13.6	7.3	1.6	125.0	40.0	41.6
80	23.0	14.0	11.0	2.0	162.5	50.0	54.1
100	25.5	14.8	13.5	2.8	185.0	65.0	61.6



Regressie-uitvoer:

Constante	0
Stdfout van Jaarraming	3.181169
R kwadraat	0.978096
Aantal waarnemingen	7
Vrijheidsgraden	6

X-coëfficiënt(en) 0.333152
 Std fout van coëf. 0.010196

f 0.58